

# Bridge Inspection Report

**05369**  
**US 70 - 05 -12.14**  
**over**  
**CANEY CREEK**



**Inspection Date:**

**Inspected By:**

**Inspection Type(s):**

## TABLE OF CONTENTS

	PAGE NUMBER
LOCATION MAP	3
NATIONAL BRIDGE INVENTORY	6
ELEMENTS	7
PICTURES	8
SKETCHES	9

Inspector:

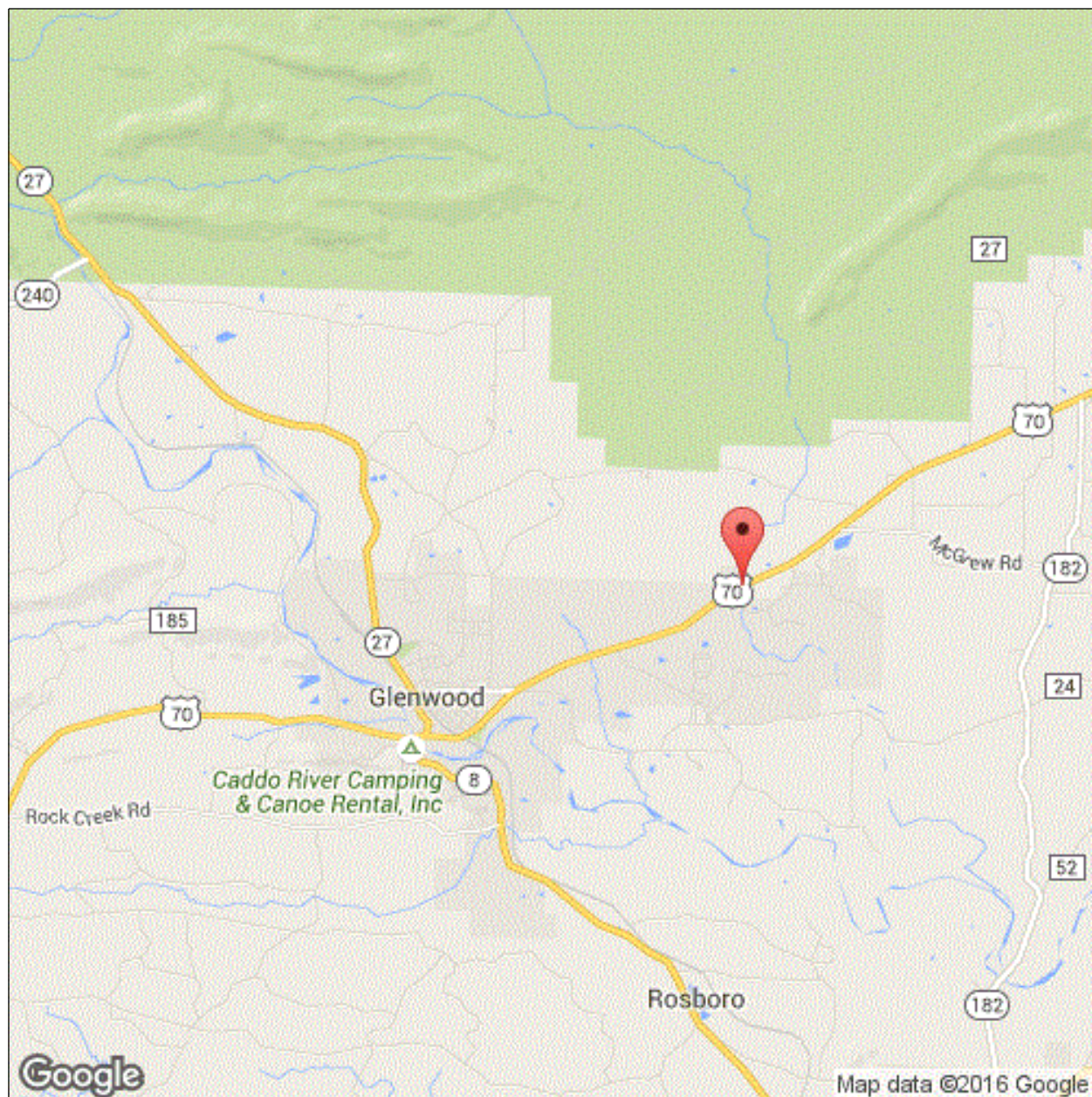
Structure Number: 05369

Inspection Date:

Facility Carried: US 70 - 05 -12.14

### Bridge Inspection Report

### Location Map



Latitude: 34.34109

Longitude: -93.50094



Inspector:

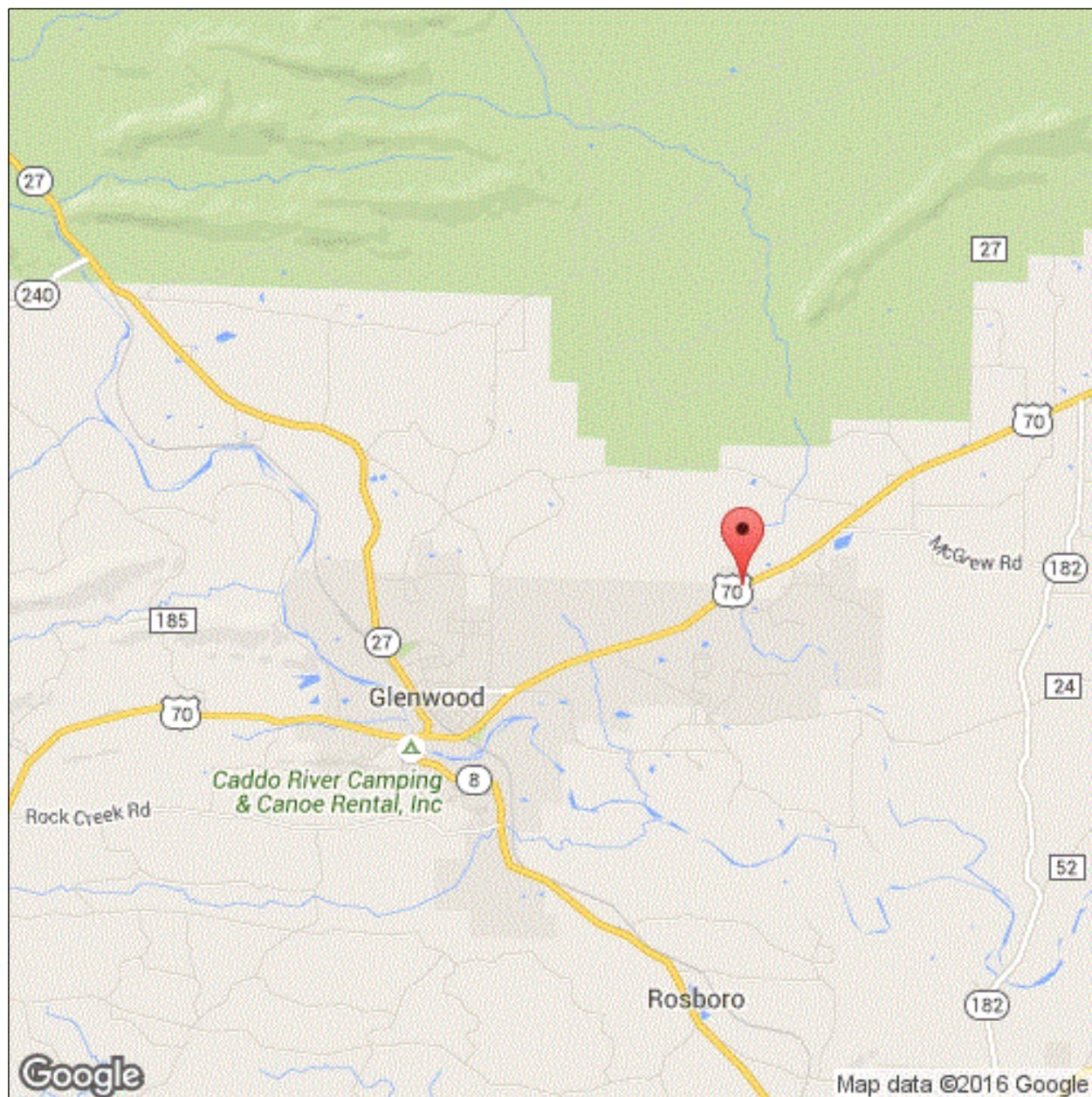
Structure Number: 05369

Inspection Date:

Facility Carried: US 70 - 05 -12.14

### Bridge Inspection Report

### Location Map



Latitude: 34.34109

Longitude: -93.50094



**Inspector:**

**Inspection Date:**

**Structure Number:** 05369

**Facility Carried:** US 70 - 05 - 12.14

**Bridge Inspection Report**

**Executive Summary**

Inspector:

Structure Number: 05369

Inspection Date:

Facility Carried: US 70 - 05 -12.14

## Bridge Inspection Report

## National Bridge Inventory

IDENTIFICATION		INSPECTIONS	
(1) STATE CODE	056 - Arkansas	(90) INSPECTION DATE	07/03/2018
(8) STRUCTURE NUMBER	05369	(91) DESIGNATED INSPECTION FREQUENCY	24
(5) INV. ROUTE (ON/UNDER)	1 2 1 70 0	(92) CRITICAL FEATURE INSPECTION	(93) CFI DATE
(2) HIGHWAY AGENCY	03 (3) COUNTY CODE 109	A. FRACTURE CRITICAL DETAIL	N
(4) PLACE CODE	00000	B. UNDERWATER INSPECTION	N
(6) FEATURES INTERSECTED	CANEY CREEK	C. OTHER SPECIAL	N
(7) FACILITY CARRIED	US 70 - 05 -12.14		
(9) LOCATION	2.0 MI E OF GLENWOOD		
(11) MILEPOINT 12.140	(12) BASE HIGHWAY NETWORK 0		
(13A) LRS INVENTORY ROUTE	0000000000 (13B) SUBROUTE NUMBER 00		
(16) LATITUDE 34.34109	(17) LONGITUDE -93.50094		
(98A) BORDER BRIDGE CODE			
PERCENT RESPONSIBILITY	(99) BORDER BRIDGE STRUCT		
STRUCTURE TYPE AND MATERIAL		CONDITION	
(43) STRUCTURE TYPE, MAIN		(58) DECK	6
A) KIND OF MATERIAL/DESIGN: 4 - Steel continuous		(59) SUPERSTRUCTURE 7	(60) SUBSTRUCTURE 7
B) TYPE OF DESIGN/CONSTR: 02 - Stringer/Multi-beam or Girder		(61) CHANNEL & CHANNEL PROTECTION 7	(62) CULVERT N
(44) STRUCTURE TYPE, APPROACH SPANS			
A) KIND OF MATERIAL/DESIGN: 0 - Other			
B) TYPE OF DESIGN/CONSTR: 00 - Other			
(45) NUMBER OF SPANS IN MAIN 3	(46) NUMBER OF APPROACH 0		
(107) DECK STRUCTURE TYPE 1	(108A) WEARING SURFACE 1		
(108B) DECK MEMBRANE 0	(108C) DECK PROTECTION 0		
AGE OF SERVICE		LOAD RATING AND POSTING	
(27) YEAR BUILT 1971	(106) YEAR RECONSTRUCTED 0000	(31) DESIGN LOAD	5
(42) TYPE OF SERVICE ON 1 UNDER 5		(63) METHOD USED TO DETERMINE OPERATING RATING	1
(28) LANES ON 02 UNDER 00		(64) OPERATING RATING	60.0
(29) AVERAGE DAILY TRAFFIC 4200	(19) BYPASS DETOUR LENGTH 15	(65) METHOD USED TO DETERMINE INVENTORY RATING	1
(30) YEAR OF AVERAGE DAILY TRAFFIC 2014		(66) INVENTORY RATING	36.0
(109) AVERAGE DAILY TRUCK TRAFFIC 1		(70) BRIDGE POSTING	5
		(41) STRUCTURE OPEN/POSTED/CLOSED	A
GEOMETRIC DATA		APPRAISAL	
(48) LENGTH OF MAX SPAN (ft.) 83	(49) STRUCTURE LENGTH (ft.) 217	(67) STRUCTURAL EVALUATION	7
(50) CURB/SIDEWALK WIDTHS (ft.) LEFT 0.5 RIGHT 0.5		(68) DECK GEOMETRY	6
(51) BRDG RDWY WIDTH CURB-TO-CURB (ft.) 43.3		(69) UNDERCLEARANCES, VERTICAL & HORIZONTAL	N
(52) DECK WIDTH, OUT-TO-OUT (ft.) 46.2		(71) WATERWAY ADEQUACY	7
(32) APPROACH ROADWAY WIDTH (ft.) 44.0		(72) APPROACH ROADWAY ALIGNMENT	8
(33) BRIDGE MEDIAN 0	(34) SKEW (DEG.) 10	(36) TRAFFIC SAFETY FEATURE	
(35) STRUCTURE FLARED 0	(10) INV RTE, MIN VERT CLEAR (ft.) 99.99	36A) BRIDGE RAILINGS:	1
(47) TOTAL HORIZONTAL CLEARANCE (ft.) 44.3		36B) TRANSITIONS:	1
(53) VERTICAL CLEARANCE OVER BRIDGE ROADWAY (ft.) 99.99		36C) APPROACH GUARDRAIL:	1
(54) VERTICAL UNDER CLEARANCE (ft.) N 0		36D) APPROACH GUARDRAIL ENDS:	1
(55) LATERAL UNDER CLEARANCE RIGHT (ft.) N 99.9		(113) SCOUR CRITICAL BRIDGES	8
(56) MIN LATERAL UNDER CLEARANCE (ft.) 0		SUFFICIENCY RATING 95.3	STATUS 0
PROPOSED IMPROVEMENTS		CLASSIFICATION	
(75A) TYPE OF WORK PROPOSED	(75B) WORK DONE BY	(112) NBIS BRIDGE LENGTH	Y
(76) LENGTH OF STRUCTURE IMPROVEMENT (ft.) 0		(104) HIGHWAY SYSTEM OF THE INVENTORY ROUTE	0
(94) BRIDGE IMPROVEMENT COST (\$)	0	(26) FUNCTIONAL CLASSIFICATION OF INVENTORY ROUTE	06
(95) ROADWAY IMPROVEMENT COST (\$)	0	(100) STRAHNET HIGHWAY DESIGNATION	0
(96) TOTAL PROJECT COST	0	(101) PARALLEL STRUCTURE DESIGNATION	N
(97) YEAR OF IMPROVEMENT COST ESTIMATE	0000	(102) DIRECTION OF TRAFFIC	2
(114) FUTURE ADT 6520	(115) YEAR OF FUTURE ADT 2028	(103) TEMP STRUCTURE	
		(105) FEDERAL LANDS HIGHWAYS	0
		(110) DESIGNATED NATIONAL NETWORK	1
		(20) TOLL	3
		(21) MAINTENANCE RESPONSIBILITY	01
		(22) OWNER	01
		(37) HISTORICAL	5
		NAVIGATION DATA	
		(38) NAVIGATION CONTROL	0
		(111) PIER OR ABUTMENT PROTECTION	1
		(39) NAV VERT CLEARANCE (ft.)	0
		(116) MIN NAVIGATION VERT CLEARANCE, VERT LIFT BRIDGE (ft.)	0
		(40) NAV HORIZONTAL CLEARANCE (ft.)	0



Inspector:

Structure Number: 05369

Inspection Date:

Facility Carried: US 70 - 05 -12.14

## Bridge Inspection Report

## Element Inspection

	Environment	Total Quantity	Units	Condition State 1	Condition State 2	Condition State 3	Condition State 4
<b>12 - Reinforced Concrete Deck</b>	1- Ben.	9335	sq. ft.	1331	0	8004	0
Span 2 left side spall w/rebar exposed at drain....Span 3 bay 6 spall w/rebar exposed mid span.small spalls top of deck with rebar exposed							
1090 - Exposed Rebar		4				4	
1130 - Cracking (RC and Other)		8000				8000	
<b>107 - Steel Open Girder/Beam</b>	1- Ben.	1505	ft.	1505			
515 - Steel Protective Coating		18060	sq. ft.	18060			
<b>205 - Reinforced Concrete Column</b>	1- Ben.	6	each	6			
<b>215 - Reinforced Concrete Abutment</b>	1- Ben.	114	ft.	111	3	0	0
Abutment 1 rebar exposed							
1090 - Exposed Rebar		3			3		
<b>234 - Reinforced Concrete Pier Cap</b>	1- Ben.	89	ft.	86	0	3	0
Bent 1 face of cap spall w/rebar exposed							
1080 - Delamination/Spall/Patched Area		3				3	
<b>300 - Strip Seal Expansion Joint</b>	1- Ben.	96	ft.	80	0	16	0
BENT 4 SEAL BAD ABOUT 16LF							
2320 - Seal Adhesion		16				16	
<b>311 - Movable Bearing</b>	1- Ben.	21	each	13	0	8	0
BEARING 3,4,5,6 RUST AND HEAVY SECTION LOSS TO BOTTOM PLATE AND BOTTOM OF ROCKER , BOTLS ARE RUSTED INTO AND 1 EAR HAS BROKE ON BEARING 4, AT BENT 1 .....END BENT BEARING ARE RUSTED AT Bearing #4,5,6,7							
1000 - Corrosion		8				8	
515 - Steel Protective Coating		63	sq. ft.	39	0	24	0
3440 - Effectiveness (Steel Protective Coatings)		24				24	
<b>313 - Fixed Bearing</b>	1- Ben.	7	each	0	0	7	0
1000 - Corrosion		7				7	
515 - Steel Protective Coating		21	sq. ft.	0	0	21	0
3440 - Effectiveness (Steel Protective Coatings)		21				21	
<b>321 - Reinforced Concrete Approach Slab</b>	1- Ben.	2700	sq. ft.	2700			
End bridge approach has asphalt over it. Asphalt coming apart photo taken per 07/03/2018 inspection							
<b>330 - Metal Bridge Railing</b>	1- Ben.	434	ft.	434			

**Inspector:**

**Inspection Date:**

**Structure Number:** 05369

**Facility Carried:** US 70 - 05 - 12.14

**Bridge Inspection Report**

**Pictures**



**Inspector:**

**Inspection Date:**

**Structure Number:** 05369

**Facility Carried:** US 70 - 05 - 12.14

**Bridge Inspection Report**

**Sketches**

Inspector:

Structure Number: 05369

Inspection Date:

Facility Carried: US 70 - 05 -12.14

## Bridge Inspection Report

### Maintenance Needs

Date Reported: 7/14/2014 12:00:00 AM

Priority: D - Routine

Work Code:

---

#### Deficiency Description:

JOINT SEAL LEAKING BT 4 END  
RT SIDE BRIDGE ABOUT 16 FT.

#### Work Description:

---

Date Repairs Completed:

Maintenance Comments:

---

Stage: Assigned



PHOTO 1 Description

Stage: Assigned

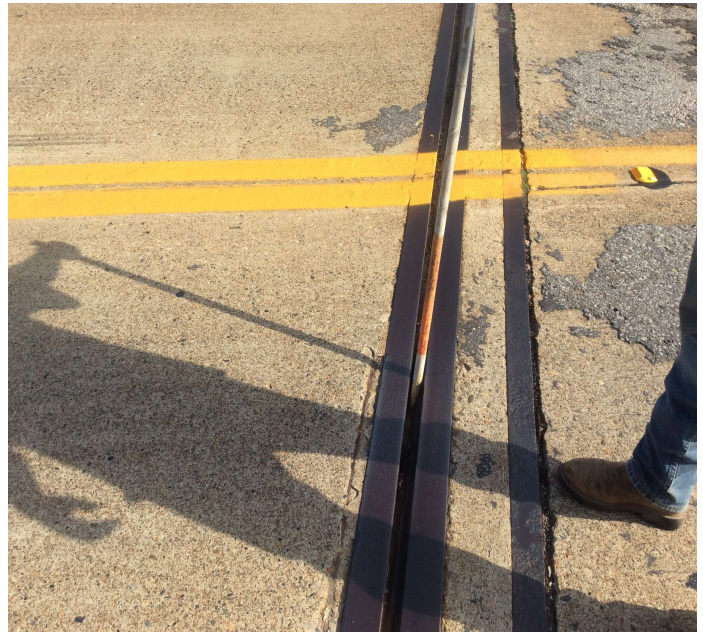


PHOTO 2 Description



Inspector:

Structure Number: 05369

Inspection Date:

Facility Carried: US 70 - 05 -12.14

### Bridge Inspection Report

## Maintenance Needs

Date Reported: 07/11/2016

Priority: D - Routine

Work Code:

### Deficiency Description:

BEARING 3,4,5,6 RUST AND HEAVY SECTION LOSS TO BOTTOM PLATE AND BOTTOM OF ROCKER , BOLTS ARE RUSTED INTO AND  
1 EAR IS BROKEN ON BEARING 4, AT BENT 1 .....END BENT BEARINGS ARE RUSTED AT Bearing #4,5,6,7

### Work Description:

Date Repairs Completed:

Maintenance Comments:

Stage: Open



PHOTO 1      Description      Bent 1 bearing rust, ears on bearing broke photo of bearing 4

Stage: Open



PHOTO 2      Description      End bent bearing rust Bearing #4,5,6,7

Inspector:

Inspection Date:

Structure Number: 05369

Facility Carried: US 70 - 05 -12.14

## Bridge Inspection Report

### Maintenance Needs

Stage: Open



PHOTO 3 Description Bent 1 bearing #3 rust and section loss

Stage: Assigned



PHOTO 4 Description BENT 4



Inspector:

Structure Number: 05369

Inspection Date:

Facility Carried: US 70 - 05 -12.14

### Bridge Inspection Report

## Maintenance Needs

Date Reported: 07/03/2018

Priority: D - Routine

Work Code:

---

### Deficiency Description:

Sealable deck cracks all spans and map like cracking. 4 spalls on deck with rebar exposed less than 1 ft square 3/4 DEPTH

### Work Description:

---

Date Repairs Completed:

Maintenance Comments:

---

Stage: Open



PHOTO 1      Description      MAP LIKE CRACKING ENTIRE  
BRIDGE VARIOUS LOCATIONS

Stage: Open



PHOTO 2      Description



Inspector:

Structure Number: 05369

Inspection Date:

Facility Carried: US 70 - 05 -12.14

## Bridge Inspection Report

### Maintenance Needs

Stage: Open



PHOTO 3      Description      DECK SPALL SPAN 2 LEFT SIDE

Stage: Open



PHOTO 4      Description      Spall in deck with rebar exposed span 1..

Stage: Open



PHOTO 5      Description      Sealable deck cracks and map like cracking. Photo taken of span 2



Inspector:

Structure Number: 05369

Inspection Date:

Facility Carried: US 70 - 05 -12.14

### Bridge Inspection Report

## Maintenance Needs

Date Reported: 07/03/2018

Priority: D - Routine

Work Code:

---

### Deficiency Description:

ASPHALT ON APPROACH COMING APPART END BRIDGE. Montgomery co. side.

### Work Description:

---

Date Repairs Completed:

Maintenance Comments:

---

Stage: Open



PHOTO 1      Description      ASPHALT ON APPROACH COMING  
APPART END BRIDGE